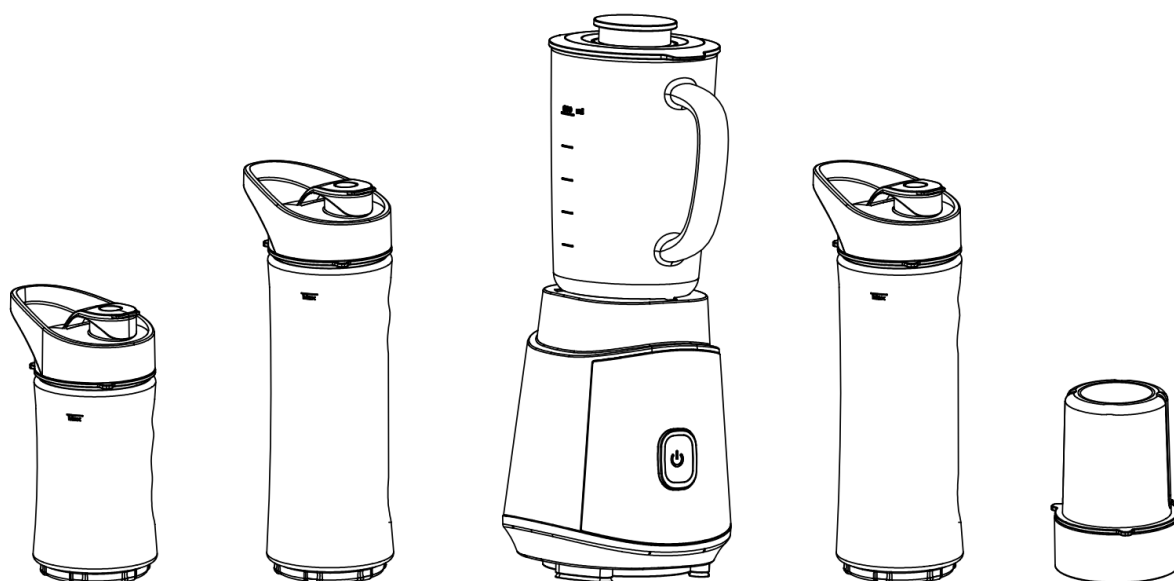


lovio

HOME

Jug blender

EN User manual



Model: LVJBL001

Rated voltage: 220-240V~50/60Hz

Rated power: 500W

Keep these instructions for future reference and pass them on to future users with the device.

SAFETY ISSUES



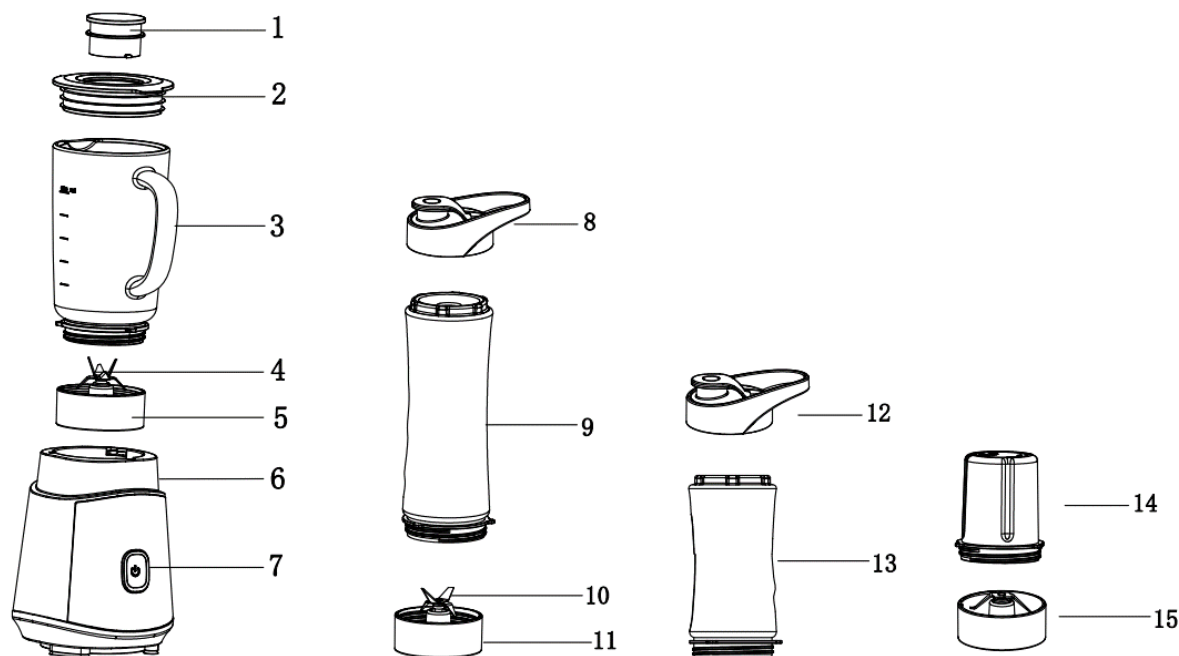
WARNING! Risk of electric shock

When using electrical appliances especially when children are present, basic safety precautions should always be followed, including the following:

1. Read all instructions before using.
2. Before plugging into a socket, check whether your voltage corresponds to the rating label of the appliance.
3. Do not operate any appliance with a damaged cord or plug, or after the appliance malfunctions, or has been dropped or damaged in any matter. Return appliance to the nearest authorized service facility for examination, repair or electrical or mechanical adjustment.
4. To protect against electrical shock, do not submerge the mixer or allow AC cord to come in contact with water or other liquids.
5. Do not let cord hang over edge of table or counter or touch hot surfaces, including the stove.
6. This appliance is not intended for use by persons (including children) with reduced physical, sensory or mental capabilities, or lack of experience and knowledge, unless they have been given supervision or instruction concerning use of the appliance by a person responsible for their safety.
7. Pay more attention on the running appliance, never leave appliance unattended.
8. Do not place an appliance on or near a hot gas or on a heated oven.
9. Do not use outdoors.
10. Never operate the product when the bottle or glass jar is empty and do not remove the lid before the blades come to a complete stop.
11. Always unplug the appliance before assembling, disassembling, cleaning.
12. Avoid contacting moving parts
13. Warning: misuse may cause serious injury.
To be take care when operated the blade base, especially removing the blade base from bottle and cleaning the bottle.
14. Blades are sharp. Handle carefully.
15. To reduce the risk of injury, do not disassemble components without the appropriate tools.
16. Always operate blender with cover in place.
17. Always operate appliance on flat surface.
18. Never use any attachments which are not listed on the instruction manual, the use of attachments, including glass jars, etc. Not recommended by the manufacturer may cause a risk of injury to persons.
19. Do not blend hot liquids.

INSTRUCTION

PARTS AND ASSEMBLY



- 1. Small cover
- 2. Cover
- 3. Glass jar
- 4. Blades
- 5. Blades base
- 6. Machine
- 7. Switch button

- 8. Bottle lid
- 9. 570ml bottle
- 10. Blades
- 11. Blades base
- 12. Bottle lid
- 13. 400ml bottle

- 14. Grinder bottle
- 15. Grinder blades base

USAGE OF THE BLENDER



DANGER! Risk of cutting injuries

- 1.** Place the machine on a flat surface, open the glass jar or the bottle.
- 2.** Fill the glass jar or bottle with your favorite ingredients, all the ingredient must be filled below the glass jar or the bottle max level mark.
- 3.** Fasten the blade base on the open end of the bottle, lock to avoid liquid leakage, same with the glass jar.
- 4.** Turn the bottle upside down, put the bottle and blade base together on the blender machine, once aligned with the slot, press the bottle from top to bottom and turn clockwise to lock with the machine. As for use the glass jar, no need to turn the glass jar upside down at the very beginning.

- 6.** Put the plug to the socket, the button will in bright white light.
- 7.** Press the key and do not release your hand, then blender start to work. Release button to stop.
- 8.** Turn the bottle over and place on a flat surface, take out the blade base, put the drinking lid on.

Do not operate more than 60 seconds at one time.

Note

1. The appliance is only permitted to use 2minutes continuously maximum. Before it's used again, it must cool down enough.
2. Parts and unit are not dishwasher or dryer safe.
3. Do not use for ice crushing when ice cubes are bigger than 3*2 cm, and do not use for any ice crushing when bottle is without water inside.
4. Only for liquid and soft fruits, Cut fruit first in pieces. Don't use hard fruits.
5. When overload, motor will automatically stop, please unplug, empty cup, wait for 15 minutes to cool down motor, after can use again.
6. Keep children away from the machine and blade.
7. Do not clean with water or liquid.
8. Do not use thinner, polish powder, bleach, etc.

CLEANING

1. Unplug the appliance from socket before cleaning.
2. After use, clean the main body with wet towel and dry it with dry towel. Absolutely keep away from water or high humidity.
3. Before wash the bottle and blade part, remove the sealing ring first, then wash with running water. After cleaning must be fully dry.
4. Keep away from direct sunlight and damp place.

lovio

HOME

SERVICE HOTLINE

tel: +48 22 123 96 60 or e-mail: serwis@manta.com.pl

Monday to Friday, 9 a.m. to 5 p.m.

The manufacturer reserves the right to make changes to the product specifications without prior notice.



Manta S.A. hereby declares that this product complies with the essential requirements and other provisions of the so-called "New Approach" Directives of the European Union. The device complies with the European Directives 2014/35/EU.



The device is marked with the symbol of a crossed-out waste container, in accordance with European Directive 2012/19/EU and the Polish Act of 11 September 2015. (Journal of Laws 2015 item 1688) on Waste Electrical and Electronic Equipment (WEEE). Products marked with this symbol should not be disposed of or thrown away with other household waste at the end of their useful life. The user is obliged to dispose of waste electrical and electronic equipment by delivering it to a designated point where such hazardous waste is recycled. The collection of this type of waste in separate locations and the proper recovery process contribute to the protection of natural resources. Proper recycling of waste electrical and electronic equipment has a positive impact on human health and the environment. For information on where and how to dispose of waste electrical and electronic equipment in an environmentally safe manner, the user should contact the relevant local authority, the waste collection point or the point of sale where they purchased the equipment.

Attention!

Product design and technical specifications are subject to change without prior notice. This applies in particular to technical specifications, software, pictures and the user manual. This user manual serves as a general orientation for the operation of the product. The manufacturer and distributor assume no liability for any inaccuracies resulting from errors in the descriptions contained in this user manual.

Made in P.R.C.

FOR MANTA EUROPE